

SANTAMONICA POUF

Design Christophe Pillet

Struttura: legno multistrato imbottito in poliuretano espanso indeformabile rivestito in tessuto protettivo accoppiato.

Basamento: in metallo color Nero Sablé, color Sabbia Sablé oppure color Greige Sablé.

Rivestimento: sfoderabile in tessuto, fisso in pelle.

Profilo: stesso materiale e colore del rivestimento. Su richiesta in contrasto esclusivamente in Grosgrain.

Structure: plywood padded with non-deformable polyurethane foam covered with doubled protective fabric.

Base: in metal Black Sablé colour, Sand Sablé colour or Greige Sablé colour.

Cover: removable in fabric, fix in leather.

Piping: same material and colour as the cover. On request in contrast exclusively in Grosgrain.



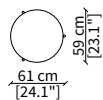
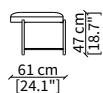
SANTAMONICA POUF

Design Christophe Pillet

POUFS

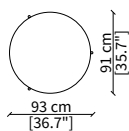
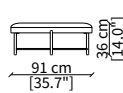
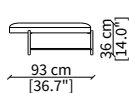
cod. 18106

Elemento Ø59/61xh47 cm / Element Ø59/61xh47 cm



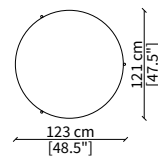
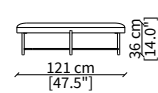
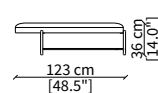
cod. 18107

Elemento Ø91/93xh36 cm / Element Ø91/93xh36 cm



cod. 18108

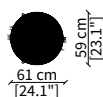
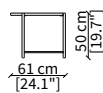
Elemento Ø121/123xh36 cm
Element Ø121/123xh36 cm



TAVOLINI / SMALL TABLES

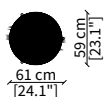
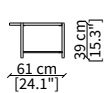
cod. 18100

Tavolino tondo Ø 59 x h 50 cm
Round small table Ø 59 x h 50 cm



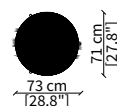
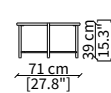
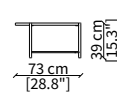
cod. 18101

Tavolino tondo Ø 59 x h 39 cm
Round small table Ø 59 x h 39 cm



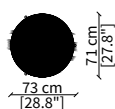
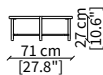
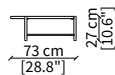
cod. 18102

Tavolino tondo Ø 71 x h 39 cm
Round small table Ø 71 x h 39 cm



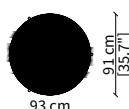
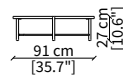
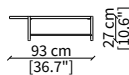
cod. 18103

Tavolino tondo Ø 71 x h 27 cm
Round small table Ø 71 x h 27 cm



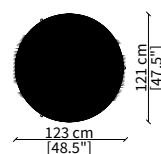
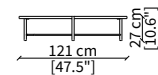
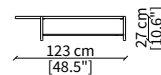
cod. 18104

Tavolino tondo Ø 91 x h 27 cm
Round small table Ø 91 x h 27 cm



cod. 18105

Tavolino tondo Ø 121 x h 27 cm
Round small table Ø 121 x h 27 cm



SANTAMONICA POUF Design Christophe Pillet

TESSUTO / FABRIC



Asole



Avignone



Bellagio



Butterfly



Caprera



Capri



Caracalla



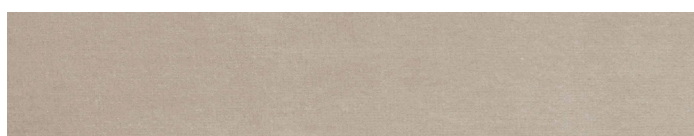
Chioggia



Candotti



Dorian



Fiocco



Il Trovatore



Ischia



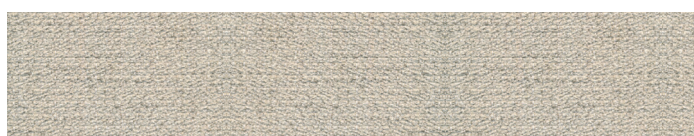
Katmandu



La Boheme



Lario



Linosa



Maddalena

La presente tabella tessile, pelli e materiali è a solo titolo indicativo e non vincolante. L'effettiva disponibilità di ogni materiale deve essere preventivamente verificata con l'ufficio commerciale Frigerio.

L'azienda si riserva il diritto di sospendere la disponibilità di qualsiasi materiale senza alcun obbligo di preavviso sulla presente scheda tecnica.

I colori visualizzati, per ovvie ragioni tecniche, sono indicativi e possono differire dall'originale. Fare riferimento al listino prezzi per uso e disponibilità di ogni singola finitura.

The above textile, leather and material charts are only indicative and not binding. The actual availability of any material shall be checked in advance with the Frigerio commercial office. The company reserves the right to discontinue any material without any obligation of due notice on this technical data sheet.

The colours visualized, for obvious technical reasons, are indicative and may differ from the original.

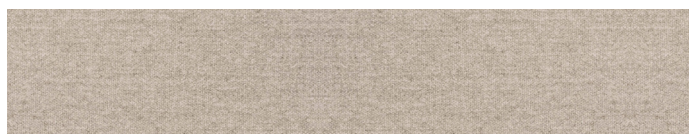
Please refer to price list for use and availability of each finish.

SANTAMONICA POUF Design Christophe Pillet

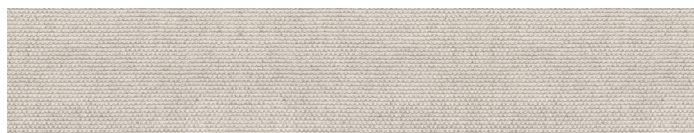
TESSUTO / FABRIC



Moritz



Nebraska



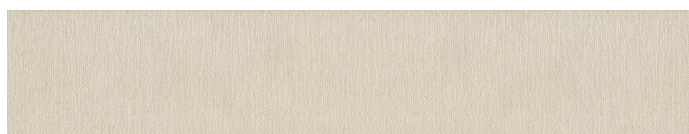
Padova



Panarea



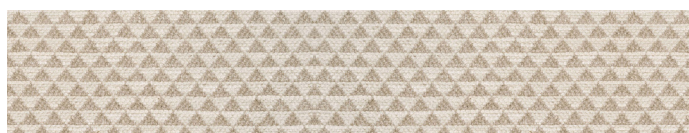
Piazza Di Spagna



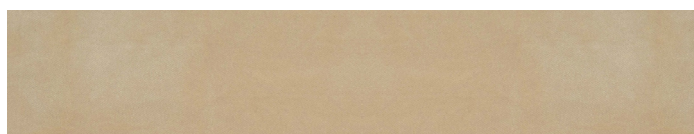
Ponza



Porto Cervo



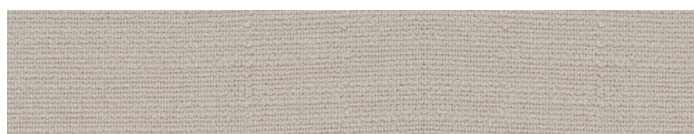
Porto Rotondo



Rem



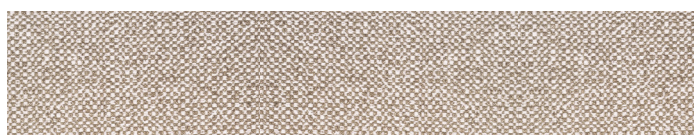
San Remo



Tellaro



Tenerife



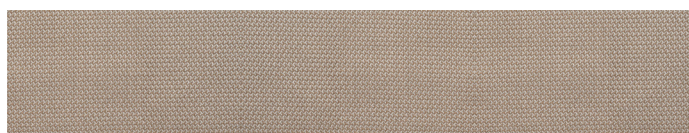
Turandot



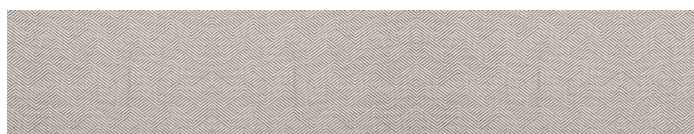
Ventotene



Villa Borghese



Villa d'Este



Villa Flori



VF 1650

La presente tabella tessile, pelli e materiali è a solo titolo indicativo e non vincolante. L'effettiva disponibilità di ogni materiale deve essere preventivamente verificata con l'ufficio commerciale Frigerio.

L'azienda si riserva il diritto di sospendere la disponibilità di qualsiasi materiale senza alcun obbligo di preavviso sulla presente scheda tecnica.

I colori visualizzati, per ovvie ragioni tecniche, sono indicativi e possono differire dall'originale. Fare riferimento al listino prezzi per uso e disponibilità di ogni singola finitura.

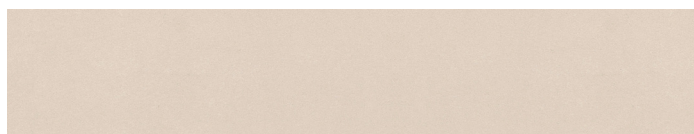
The above textile, leather and material charts are only indicative and not binding. The actual availability of any material shall be checked in advance with the Frigerio commercial office. The company reserves the right to discontinue any material without any obligation of due notice on this technical data sheet.

The colours visualized, for obvious technical reasons, are indicative and may differ from the original.

Please refer to price list for use and availability of each finish.

SANTAMONICA POUF Design Christophe Pillet

TESSUTO / FABRIC



VF 1700



VF 1750



VF 1800

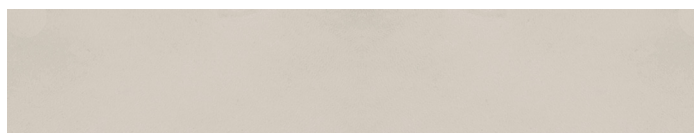


VF 2450

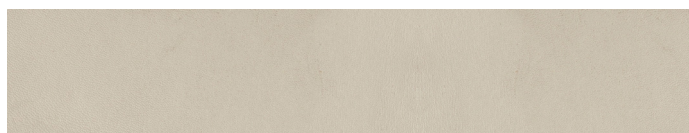


VF 2550

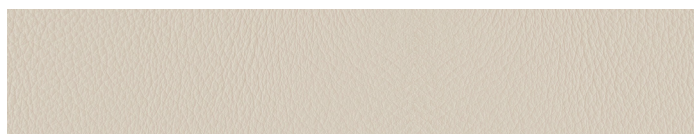
PELLE / LEATHER



Nubuk



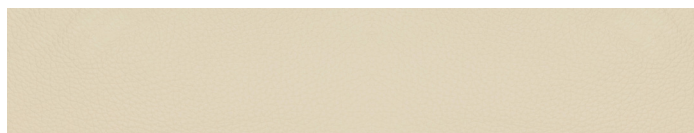
Anilina



Siena



Bolgheri



Pisa

La presente tabella tessile, pelli e materiali è a solo titolo indicativo e non vincolante. L'effettiva disponibilità di ogni materiale deve essere preventivamente verificata con l'ufficio commerciale Frigerio.

L'azienda si riserva il diritto di sospendere la disponibilità di qualsiasi materiale senza alcun obbligo di preavviso sulla presente scheda tecnica.

I colori visualizzati, per ovvie ragioni tecniche, sono indicativi e possono differire dall'originale. Fare riferimento al listino prezzi per uso e disponibilità di ogni singola finitura.

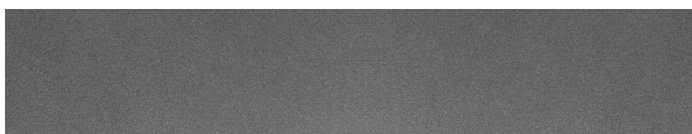
The above textile, leather and material charts are only indicative and not binding. The actual availability of any material shall be checked in advance with the Frigerio commercial office. The company reserves the right to discontinue any material without any obligation of due notice on this technical data sheet.

The colours visualized, for obvious technical reasons, are indicative and may differ from the original.

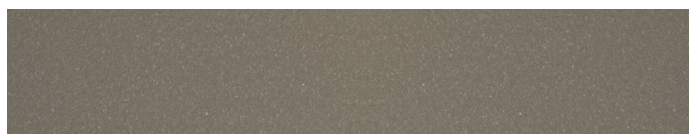
Please refer to price list for use and availability of each finish.

SANTAMONICA POUF Design Christophe Pillet

METALLI / METALS



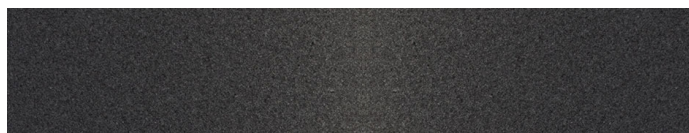
Color Brunito
Burnished Colour



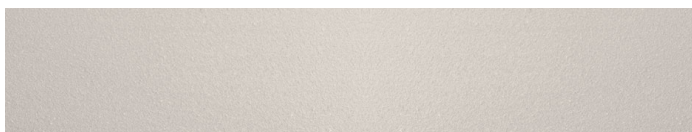
Color Greige Sablè
Greige Sablè Colour



Color Titanio
Titanium Colour



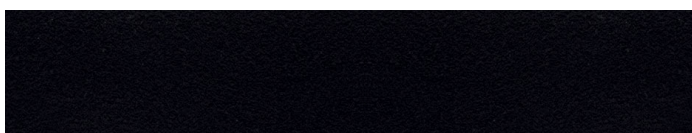
Color Grafite Lucido
Glossy Graphite Colour



Color Sabbia Sablè
Sand Sablè Colour



Color Antracite Lucido
Glossy Anthracite Colour



Color Nero Sablè
Black Sablè Colour

PROFILO / PIPING

Per il profilo tono su tono fare riferimento alla gamma tessile Frigerio.
Per il profilo in contrasto, disponibile solo in Grosgrain, fare riferimento al listino prezzi e alla pagina del sito dedicata.

For piping tone on tone please refer to the textile range of Frigerio.
For piping in contrast, available only in Grosgrain, please refer to the price list and the dedicated landing page in our website.

La presente tabella tessile, pelli e materiali è a solo titolo indicativo e non vincolante. L'effettiva disponibilità di ogni materiale deve essere preventivamente verificata con l'ufficio commerciale Frigerio.

L'azienda si riserva il diritto di sospendere la disponibilità di qualsiasi materiale senza alcun obbligo di preavviso sulla presente scheda tecnica.

I colori visualizzati, per ovvie ragioni tecniche, sono indicativi e possono differire dall'originale. Fare riferimento al listino prezzi per uso e disponibilità di ogni singola finitura.

The above textile, leather and material charts are only indicative and not binding. The actual availability of any material shall be checked in advance with the Frigerio commercial office. The company reserves the right to discontinue any material without any obligation of due notice on this technical data sheet.

The colours visualized, for obvious technical reasons, are indicative and may differ from the original.

Please refer to price list for use and availability of each finish.